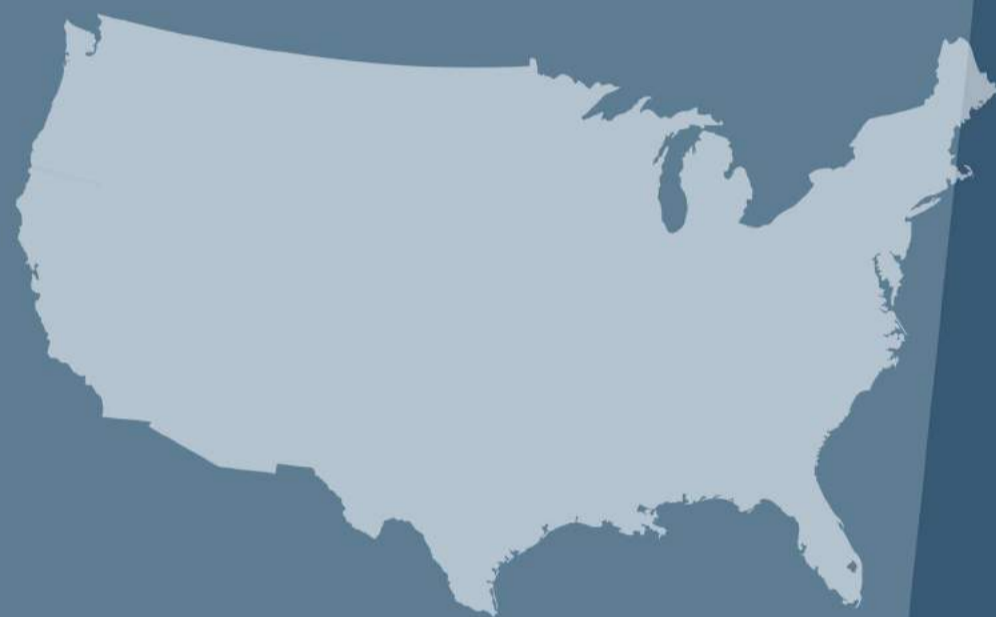
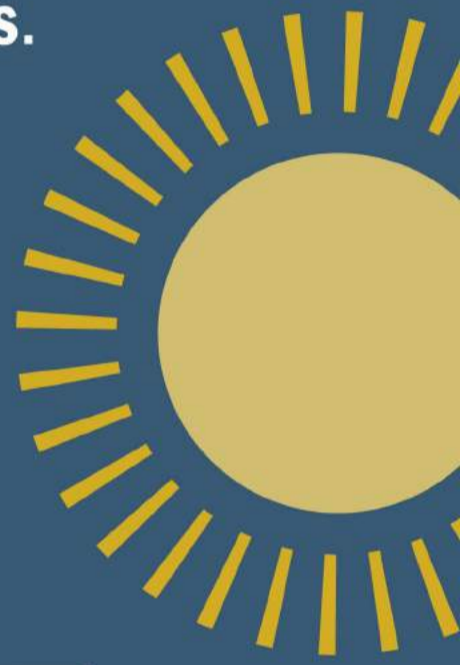


TRUCK ACCIDENTS

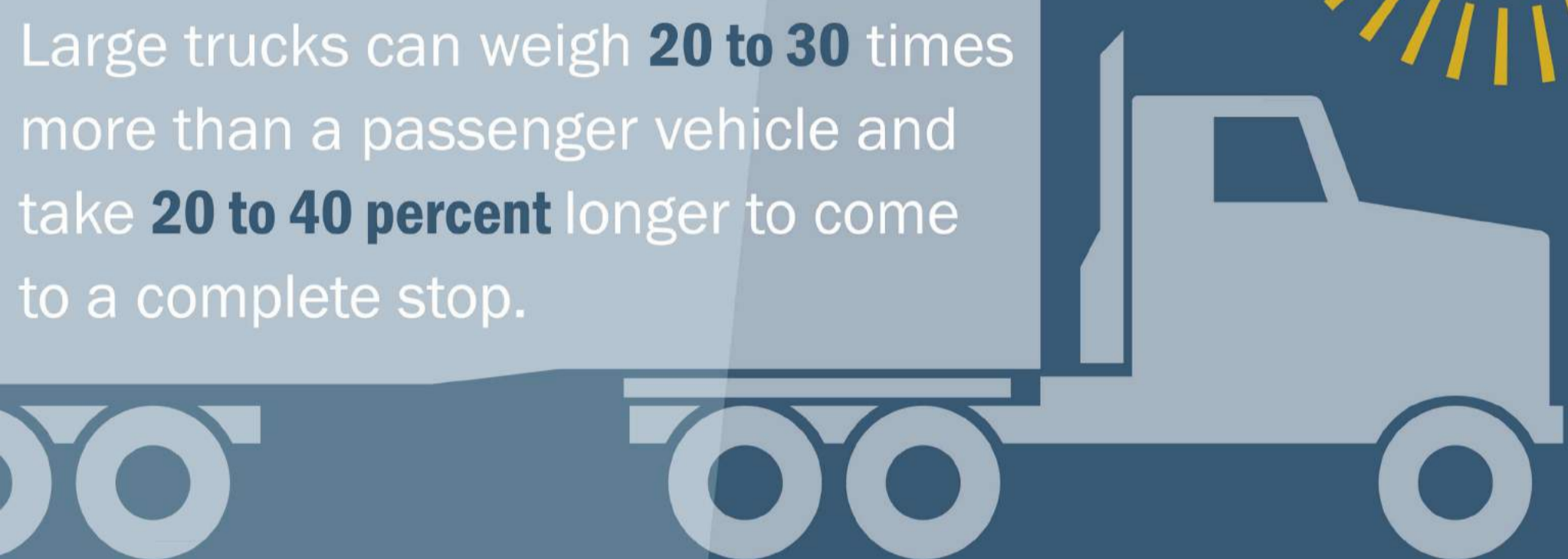


Around **4,000** people are killed in crashes involving large trucks every year in the **United States**.

Truck crashes are more likely to occur during daylight hours.



Large trucks can weigh **20 to 30** times more than a passenger vehicle and take **20 to 40 percent** longer to come to a complete stop.



70%

70% of truck wreck fatalities were occupants of the smaller vehicle.

60%

60% of fatal crashes involving large trucks occurred on rural roads.

80%

80% of large truck crashes occurred on weekdays.

Federal law states that truck drivers can drive up to **11 hours** in one stretch and **77 hours** in a **seven-day period**, though surveys suggest that many drivers commonly exceed that threshold.



THE MOST COMMON CAUSES OF DRIVER ERROR LEADING TO LARGE TRUCK CRASHES ARE:



Speeding



Distraction/Inattention



Impairment

(including Fatigue, Alcohol, and Illness)

Terry Bryant
ACCIDENT & INJURY LAW

Mr. Terry Bryant is a Former Judge and Board Certified in Personal Injury Trial Law by Texas Board of Legal Specialization

HAVE A TRUCK ACCIDENT CLAIM?
Let the attorneys at Terry Bryant help you.
CALL US AT: 800-444-5000

www.terrybryant.com/truck-accident